

Natural Stone Brochure



CONTENT

Pages 2-6: Natural Wall Stone

Pages 6-7: Cut Dimensional Wall Stone

Pages 7-11: Cut Gauged & Thermalled Flagstone

Pages 12-13: Pattern Flagging

Pages 14: Garden Path

Pages 15-18: Cut Steps & Landings

Pages 19-21: Natural Steps & Landings

Pages 21-22: Natural Stone Treads & Caps

Page 23: Notes



Photo Provided By D.S. Jolie

Natural Wall Stone

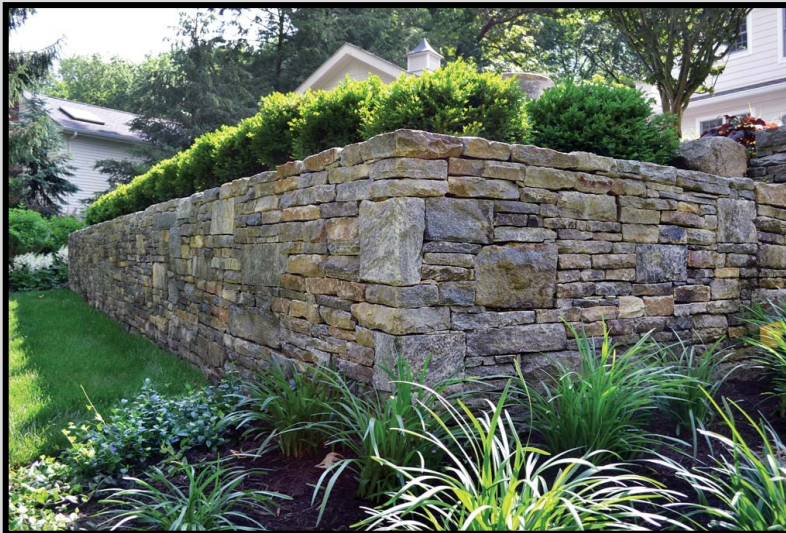
Champlain Saratoga



From the mountains of New York. A blend of pink, gray and white, highlighted with quartz and mica. This distinctive granite blends modest coloring and rich texture. A medium to course granite. Can be shaped with a hammer and chisel.

- **Size Description:** Available in a wall mix (4"-18") or Thin 1"-3" and Cottage 3"-8" .
- **Weight per pallet:** Approx. 3000 lbs.
- **Coverage per pallet:** 15-25 cu. ft.

Champlain Ticonderoga



From the hills of New York State. An appealing mix of gray-blue, caramel, amber, blush, pale green, and deep shades of brown, Ticonderoga Granite® combines fine-grained and weathered granites within a softer, less earthen palette. A medium course grained blocky granite. Can be shaped with a hammer and chisel.

- **Size Description:** Available in a wall mix (4"-18") or Thin 1"-3" and Cottage 3"-8" .
- **Weight per pallet:** Approx. 3000 lbs.
- **Coverage per pallet:** 15-25 cu. ft.

Chestnut Hill



From central New Hampshire. Lots of striations and blends of gray, blue, white and tan with rust tones. Fairly flat and blocky. Fine-grained, hard stone that can be shaped with a hammer and chisel.

- **Size Description:** 3"-12" mixed pallets
- **Weight per pallet:** Approx. 3000 lbs.
- **Coverage per pallet:** 15-25 cu. ft.

Photo Provided by Doane's Landscaping

Natural Wall Stone

Colonial Gray Wall



From Pennsylvania and New York. Part of the softer bluestone family. Primarily a pale gray stone with hues of blue, mossy greens and striations of browns and tans. Flat and blocky, easy to use and shape.

- **Size Description:** Available in a thin (1"-3") or a thick (4"-6") size mix.
- **Weight per pallet:** Approx. 3000 lbs.
- **Coverage per pallet:** 15-20 cu. ft.

New England Wall



Primarily from Massachusetts, New Hampshire and Connecticut. Salt-and-pepper grays, tans, and browns. A blend of roundish and blocky shapes. Generally, a hard stone that can be shaped and manipulated with a hammer and chisel.

- **Size Description:** 6"-18" mixed sizes on each pallet. Thins, Flats and Rounds available.
- **Weight per pallet:** Approx. 3000 lbs.
- **Coverage per pallet:** 15-20 cu. ft.

New Hampshire Wall



From eastern Vermont, central and western New Hampshire. A blend of granites with lots of color and characteristic of New England. Blue/gray, striations of white, tan and brown. Fairly blocky and square. An easy stone to use but a hard stone that can be shaped and manipulated with a hammer and chisel.

- **Size Description:** Available in a thin (1"-3") or a thick (4"-6") size mix.
- **Weight per pallet:** Approx. 4000 lbs.
- **Coverage per pallet:** 15-25 cu. ft.

Photo Provided by D.S. Jolie Landscapes

Natural Wall Stone

Oak Hill Gray



From central and coastal Maine. A very fine-grained, salt-and-pepper granite. Quintessential gray, blocky granite. Easily blended with our Chestnut Hill and Weathered Autumn Wall stone. Can be manipulated with a hammer and chisel.

- **Size Description:** 6"-18" mixed sizes on each pallet.
- **Weight per pallet:** Approx. 3000 lbs.
- **Coverage per pallet:** 15-20 cu. ft.

Photo Provided by JBC Masonry

Olde Chester Wall



From western New Hampshire and eastern Vermont. A mica schist granite with speckles and striations of shiny black, white and grays. Tones of light browns and mottled tans. A beautiful stone; fairly flat and consistent, making it easy to use. Somewhat soft, so more easily manipulated with a hammer and chisel.

- **Size Description:** Available in a thin (1"-3") or a thick (4"-6") size mix
- **Weight per pallet:** Approx. 4000 lbs.
- **Coverage per pallet:** 15-25 cu. ft.

Shepherd Bay



From the state of Maine. A perfect wall building stone made up of light and dark grays, tans, dark copper tones with a little white and cream thrown in. Relatively square and uniform and can easily be manipulated with a hammer and chisel.

- **Size Description:** Available in 2"-6" thickness mixed on a pallet.
- **Weight per pallet:** Approx. 3000 lbs.
- **Coverage per pallet:** 15-20 cu. ft.

Natural Wall Stone

Weathered Autumn



From central and coastal Maine. A variation of colors similar to Chestnut but more weathered. These two are often blended together. Autumn Weathered is a schist granite with more mica, making it a bit shinier and not as dense. Flat and blocky and easily manipulated.

- **Size Description:** 3"-12" mixed pallets
- **Weight per pallet:** Approx. 3000 lbs.
- **Coverage per pallet:** 15-25 cu. ft.

Whiteline Wall



From Massachusetts and Connecticut. White lines of quartz run through this grayish green granite. Blocky with square sizes, make it easy to use. Easily manipulated with a hammer and chisel.

- **Size Description:** Available in a thin (1"-3") or a thick (2"-8") size mix.
- **Weight per pallet:** Approx. 3000 lbs.
- **Coverage per pallet:** 15-20 cu. ft.

Photo Provided by Rye Beach Landscaping

Brunswick Granite Cut Dry Wall



From western side of New York State. Hues of gray, green and turquoise swirled with white quartz. This stone shows excellent color and character movement. With randomly split and irregular face and sawn top and bottom.

- **Size Description:** Available in 3 1/2" or 7 1/2"
- **Weight per pallet:** Approx. 3000 lbs.
- **Coverage per pallet:** 15-20 cu. ft.

Cut Dimensional Wall Stone

Majestic Dark Cut Dry Wall



From the western side of New York state. It can be 'dressed up' or 'dressed down' for use in multiple applications. Each stone is sawn on the top and bottom to simplify installation and give a clean look. Both faces and ends are split for a natural appearance.

- **Size Description:** Available in 8"-40" lengths, 7 1/2"- 8 1/2" thickness.
- **Weight per pallet:** Approx. 3000 +/- lbs.
- **Coverage per pallet:** 15-25 cu. ft.

Majestic Light Cut Dry Wall



From the western side of New York state. A black and white salt and pepper granite with a splash of quartz. It can be 'dressed up' or 'dressed down' for use in multiple applications. Each stone is sawn on the top and bottom to simplify installation and give a clean look. Both faces and ends are split for a natural appearance.

- **Size Description:** Available in 8"-40" lengths, 7 1/2"- 8 1/2" thickness.
- **Weight per pallet:** Approx. 3000 +/- lbs.
- **Coverage per pallet:** 15-25 cu. ft.

Sandy Bay Cut Dry Wall



From the western side of New York state. All the colors of a sandy beach; coppers, rust, tan, buff and pale rose. Color and comfort; it blends well with others. It is the cousin to our Bayshore Sandstone and among the prettiest of the lighter stones available.

- **Size Description:** Available in 8"-40" lengths, 7 1/2"- 8 1/2" thickness.
- **Weight per pallet:** Approx. 3000 +/- lbs.
- **Coverage per pallet:** 15-25 cu. ft.

Cut, Gauged & Thermalled Flagstone

American Mist



From Massachusetts and Connecticut. White lines of quartz run through this grayish green granite.

- **Size Description:** Available in 2" thickness
- **Weight per pallet:** Approx. 3000 lbs.
- **Coverage per pallet:** Approx. 65 sq. ft. per ton (depends on joint spacing).

Bayshore Sandstone



From the western side of New York State. Warm cream with hints of light toast and pale rose. This stone will lighten any darker area and make any space inviting.

- **Size Description:** 8"-36" diameter mixed on a pallet. Approximately 1.5" in thickness.
- **Weight per pallet:** Approx. 3000 lbs.
- **Coverage per pallet:** 65 sq ft per ton (depending on joint spacing).

Brunswick Granite



From the Western side of New York state. Hues of gray, green and turquoise swirled with white quartz. This stone shows excellent color and movement and can be used in multiple applications. Surface is shot blasted for slip resistance and color enhancement.

- **Size Description:** 4'-8' lengths, 1'-4' widths and approximately 1.5" thickness.
- **Weight per pallet:** Approx. 3000 lbs.
- **Coverage per pallet:** 65 sq ft per ton (depends on joint spacing).

Cut, Gauged & Thermalled Flagstone

Fitzwilliam



An enduring and even-grained granite of light, very bluish gray color. Our patina, 100+ year old blocks from the original quarry have been precisely cut into flagging.

- **Origin:** Massachusetts and Connecticut.
- **Material Size Range:** 4'-8' lengths x 18"-4' widths with a 2" thickness.
- **Coverage per pallet:** Approximately 65 sq. ft. per ton (depends on joint spacing).

Georgetown



From the western side of New York State. Multiple colors; greys, pinks, blues and salt and pepper. A very different colored granite boulders that have been cut into steps and flag stone. This product has a thermal texture applied to the surface which aids in slip resistant's and enhances the color.

- **Size Description:** Sizes vary up to 12"-16" in diameter with an approximate 1.5" thickness.
- **Weight per pallet:** Approx. 3000 lbs.
- **Coverage per pallet:** 85-100 sq ft (depends of joint spacing).

Liberty



From Connecticut. A light blend of grey, white and charcoal. Smooth textured granite. The shiny mica on the surface of the stone enhances the color and gives this stone a one of a kind look.

- **Size Description:** 1'-5' lengths x 1'-4' widths. approximate 2" thickness
- **Weight per pallet:** Approximately 3000 lbs. per pallet .
- **Coverage per pallet:** Approximately 85-100 sq ft per pallet.

Cut, Gauged & Thermalled Flagstone

Majestic Light Granite



From the western side of New York. This granite thermal flagstone has black and white, salt and pepper coloring with splashes of white quartz. It can be 'dressed up' or 'dressed down'; for use in multiple applications.

- **Size Description:** 18"-48" in length, 18"-48" in width and sawn into random thicknesses of between 1 3/4"-2 1/4"
- **Weight per pallet:** Approx. 3000 lbs.
- **Coverage per pallet:** 65-80 sq ft per ton (depends on joint spacing).

Majestic Dark



From western New York state. This contemporary and mysterious stone has multiple hues and depth of color. A medium grained brown, gold and dark gray blended granite.

- **Size Description:** 618"-48" in length, 18"-48" in width. Thicknesses are random between 1 3/4"-21/4"
- **Weight per pallet:** Approx. 3000 lbs.
- **Coverage per pallet:** Approx. 65 sq. ft. per ton (depends on joint spacing).

Sterling Tan



Primarily from Massachusetts, New Hampshire and Connecticut. Salt-and-pepper grays, tans, and browns.

- **Size Description:** 6"-18" mixed sizes on each pallet. Approximately 2" in thickness.
- **Weight per pallet:** Approx. 3000 lbs.
- **Coverage per pallet:** Approx. 65 sq. ft. per ton (depends on joint spacing).

Photo Provided by Stone Impressions

Cut, Gauged & Thermalled Flagstone

Thermal Standup Bluestone



Full color shades of blue/gray, green, lavender, tan and brown. These large sheets of stone have been heated to provide a thermal, non-skid flat surface. Also available in a smaller version of a garden path.

- **Size Description:** Approx. 1.5'-4' wide and 2'-6' long. Avail. in 1.5" and 2" thickness
- **Weight per pallet:** 3500-4500 lbs.
- **Coverage per pallet:** 75-120 sq ft (depends on joint spacing).

Photo Provided by Doane's Landscaping

Tumbled Irregular Bluestone



This family of bluestone is from the hills of Pennsylvania and New York. Shades of blue/gray, green, lavender, tan and brown. This stone has been put through a large tumbling machine giving the edges a softer, smoothed, and rounded appearance.

- **Size Description:** Sizes vary up to 1.5' x 1.5' and 1.5" or 2" in thickness.
- **Weight per pallet:** Approx. 3000 lbs.
- **Coverage per pallet:** 100-120 sq ft (depends of joint spacing).

Photo Provided by Alluring Hardscapes

Pattern Flagstone

Full Color Thermal Bluestone



From Pennsylvania and New York. Shades of blue/gray, green, lavender, tan and brown. Cut to specific sizes for use in patterns. A classic stone with subtle color changes throughout. Level and consistent for tables and chairs. The surface has been heated to remove imperfections, making a non-skid, flat surface. Gauged to an 1.5" thickness.

- **Size Description:** Available in sizes ranging from 12" x 12" through 36" x 36"
- **Product Packaging:** Sizes palletized separately.
- **Coverage per pallet:** Determined by square footage.

Blue/Blue Thermal Bluestone



From Pennsylvania and New York. Shades of blue/gray, blue/blue. The surface has been heated to remove imperfections, making a non-skid, flat surface. Gauged to an 1.5" thickness.

- **Size Description:** Available in sizes ranging from 12" x 12" through 36" x 36"
- **Product Packaging:** Sizes palletized separately.
- **Coverage per pallet:** Determined by square footage and pattern.

Photo Provided by Alluring Hardscapes

Tumbled Bluestone



From Pennsylvania and New York. Shades of blue/gray, green, lavender, tan and brown. This stone has been put through a large tumbling machine giving the edges a softer, smoothed, and rounded appearance.

- **Size Description:** Available in 6" x 12" and 12" x 12" with a 2" thickness.
- **Weight per pallet:** Sizes packaged separately.
- **Coverage per pallet:** Determined by square footage.

Pattern Flagstone

Caledonia Granite



From Quebec, Canada. A darker gray/brown, medium-grained granite with flecks of copper, mauve and shades of browns and grays. A woody and natural contemporary stone with a range of muted colors. Level and consistent for tables and chairs. Thermalled for slip resistance.

- **Size Description:** Available in sizes ranging from 12" x 12" through 24" x 36". Gauged thickness of 1.25".
- **Product Packaging:** Sizes palletized separately.
- **Coverage per pallet:** Determined by square footage.

Salt and Pepper Granite



From Quebec, Canada. A small to large black and white grained granite. Level and consistent for tables and chairs. Thermalled for slip resistance. Easy to install. A simple, elegant and traditional patio material.

- **Size Description:** Available in 12" x 12" up to 24" x 36". Gauged thickness of 1.25".
- **Product Packaging:** Sizes palletized separately.
- **Coverage per pallet:** Determined by square footage.

Slate



From Vermont and New York. A variety of colors to include red, black, green and mottled colors.

- **Size Description:** Available in dimensional sizes of 12" x 18" and approximately 1"- 2" in thickness.
- **Coverage per Pallet:** Determined by square footage.

Garden Path

Colonial Garden Path



From Pennsylvania and New York.. Part of the softer bluestone family. Primarily a pale gray stone with hues of blue, mossy greens and striations of browns and tans.

- **Size Description:** Pieces vary from 1'-3' long and 1'-2' wide.
- **Weight per pallet:** Approx. 3000 lbs.
- **Coverage per pallet:** 65-80 sq ft (depends on joint spacing).

Rattle Blue



From New Hampshire. A hard layered slate with dense color of grays, coppers and rust colors with hues of magenta, greens and maroon. This stone is naturally flat and has a good texture.

- **Size Description:** 18"-48" in length, 18"-48" in width. Thicknesses are random between 1 3/4"-2 1/4"
- **Weight per pallet:** Approx. 3000 lbs.
- **Coverage per pallet:** Varied; depends on joint spacing and/or by piece.

Pennsylvania Garden Path



From the hills of Pennsylvania. This natural faced stone has subtle earth tones of dark greens, tans, browns and grays. Makes for a beautiful accent to any landscape.

- **Size Description:** Vary in size from 1'-3' in length and 1' - 2' in width.
- **Weight per pallet:** Approx. 3000 lbs.
- **Coverage per pallet:** 65-80 sq. ft. (depends of joint spacing).

Cut Steps and Landings

Bayshore Sandstone



From the western side of New York State. Warm cream with hints of light toast and pale rose. This stone will lighten any darker area and make any space inviting.

- **Size Description:** Available from 3'-5' lengths, 18" or 24" treads and a thickness of approximately 7 1/2".

Black Mountain

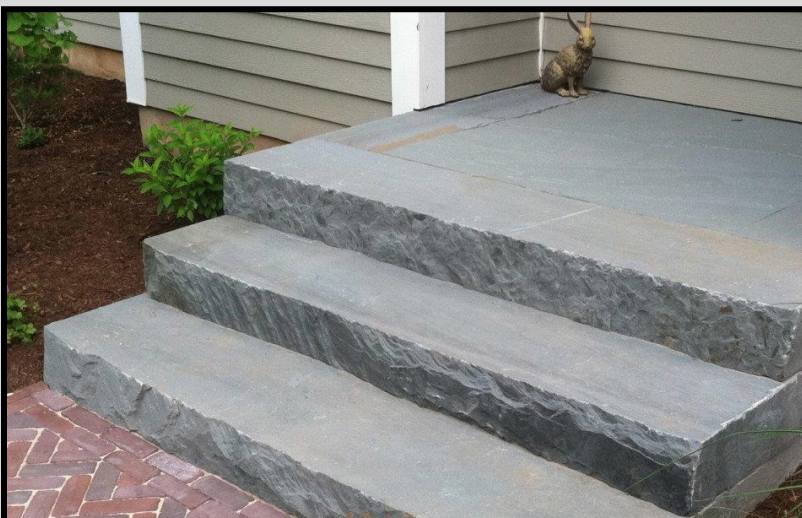


From Maine. A variation of granite colors, grays and tans. This stone has wonderful grain movement with neutral colors that will match up against any other stone.

- **Size Description:** Ranges between 3'-6' in length and 18"-2' in depth. Cut to 7" thick.

Photo Provided by Stone Impressions

Bluestone



From Pennsylvania and New York. Shades of blue/gray, blue/blue. The surface has been heated to remove imperfections, making a non-skid, flat surface. Gauged to a 6" thickness.

- **Size Description:** Available in lengths of 4'-6' with tread depths of approximately 14" and riser height of 6". The top and (2) sides are thermalled.

Cut Steps and Landings

Brunswick Granite



From the Western side of New York state. Hues of gray, green and turquoise swirled with white quartz. This stone shows excellent color and movement and can be used in multiple applications. Surface is shot blasted for slip resistance and color enhancement.

- **Size Description:** Available from 3'-5' lengths, 18" or 24" treads and a thickness of approximately 7 1/2".

Caledonia



Caledonia granite is quarried in Canada and is uniquely different, displaying a gray/black mottled finish with highlights of mica and pink quartz. Only available as rock faced.

- **Size Description:** Standard stocking lengths of 3' - 8', widths of 1' - 4' and a height of 7". Larger sizes available upon request.

Fitzwilliam



From New Hampshire. An enduring and even-grained granite of light, very bluish gray color. Our patinaed, 100+ year old blocks from the original quarry have been precisely cut into steps, treads and platforms-while maintaining the original patinas.

- **Size Description:** Available in 4'-8' lengths x 18"-4' widths. 2-7" thickness

Cut Steps and Landings

Majestic Light



From the western side of New York. This granite thermal flagstone has black and white, salt and pepper coloring with splashes of white quartz. It can be 'dressed up' or 'dressed down'; for use in multiple applications.

- **Size Description:** Available from 3'-5' lengths, 18" or 24" treads and a thickness of approximately 7 1/2".

Majestic Dark



From the western side of New York state. A medium grained brown, gold and dark grey blended granite.

- **Size Description:** Available from 3'-5' lengths, 18" or 24" treads and a thickness of approximately 7 1/2".

Sandy Bay



From western side of New York State. Coppers, rust, tan, buff and pale rose. It is the cousin of Bayshore Sandstone and among the prettiest of the lighter stones available.

- **Size Description:** Available from 3'-5' lengths, 18" or 24" treads and a thickness of approximately 7 1/2".

Cut Steps and Landings

Salt & Pepper



Quarried & fabricated in Quebec, is a traditional Salt and Pepper Granite with stronger accent lines of black and white quartz giving this stone more movement and character. Available in Rock Faced to create a face that is more protruding and rocky. Surfaces have a thermal texture.

- **Size Description:** Standard stocking lengths of 3' - 8', widths of 1' - 4' and a height of 7". Larger sizes available upon request

Woodbury



Quarried & fabricated in Vermont, this is the traditional salt and pepper granite. Available in Split Faced to create a face that is coarse in texture and in Rock Faced to create a face that is more protruding and rocky. Surfaces have a thermal texture.

- **Size Description:** Standard stocking lengths of 3' - 8', widths of 1' - 4' and a height of 7". Larger sizes available upon request.

Natural Steps and Landings

Bluestone



Full color shades of blue/gray, green, lavender, tan and brown. These large sheets of stone are available with a natural cleft surface and natural edges.

- **Size Description:** Available in 4"-8" thickness, 14"-24" depths and 4'-6' lengths.

Chestnut



From central New Hampshire. Lots of striations and blends of gray, blue, white and tan with rust tones. Fairly flat and blocky. Fine-grained, hard stone.

- **Size Description:** Available in 4"-8" thickness, 14"-24" depths and 4'-6' lengths.

Colonial



From Pennsylvania and New York.. Part of the softer bluestone family. Primarily a pale gray stone with hues of blue, mossy greens and striations of browns and tans. An extremely versatile bluestone product. Large format natural cleft slabs that can be used for coping, piers, paving, caps, and steps.

- **Size Description:** Available in 4"-8" thickness, 14"-24" depths and 4'-6' lengths.

Natural Steps and Landings

Saratoga



From the mountains of New York. A blend of pink, gray and white, highlighted with quartz and mica. This distinctive granite blends modest coloring and rich texture. A medium to coarse granite.

- **Size & Facing Area:** Thickness 3" to 5" 2 sq. ft. to 4 sq. ft. ±
- **Coverage:** Approx. 35 sq. ft. per ton
- **Package Weight:** 3500 to 4200 lbs.

Ticonderoga



From the hills of New York State. An appealing mix of gray-blue, caramel, amber, blush, pale green, and deep shades of brown. Ticonderoga Granite® combines fine-grained and weathered granites within a softer, less earthen palette. A medium course grained blocky granite.

- **Size & Facing Area:** Thickness 3" to 5" 2 sq. ft. to 4 sq. ft. ±
- **Coverage:** Approx. 35 sq. ft. per ton
- **Package Weight:** 3500 to 4200 lbs

Rattle Blue



From New Hampshire. A hard layered slate with dense color of grays, coppers and rust colors with hues of magenta, greens and maroon. This stone is naturally flat and has a good texture.

- **Size Description:** Thickness 4" to 8" ; irregular in shaped; approximately 4'-6' in length with a depth of approximately 14"-24".
- **Package Weight:** Approximately 3000 lbs.

Natural Steps and Landings

Whiteline



Primarily from Massachusetts, New Hampshire and Connecticut. Salt-and-pepper grays, tans, and browns. A blend of roundish and blocky shapes.

- **Size & Facing Area:** mixed sizes on each pallet.
- **Weight per pallet:** Approx. 3000 lbs.

Natural Stone Treads & Caps

Bluestone



Quarried & fabricated in Vermont, this is the traditional salt and pepper granite. Available in Split Faced to create a face that is coarse in texture and in Rock Faced to create a face that is more protruding and rocky. Surfaces have a thermal texture.

- **Size Description:** Available in 4–thru 8' length; 12" depth and 2" thick. Thermal on front.

Natural Stone Treads & Caps

Caledonia



Caledonia granite is quarried in Canada and is uniquely different, displaying a gray/black mottled finish with highlights of mica and pink quartz. Only available as rock faced.

- **Size Description:** Available in 3'-8' lengths; 12" depth and 2" thickness. Rock faced on (3) sides

Salt & Pepper



Quarried & fabricated in Quebec, is a traditional Salt and Pepper Granite with stronger accent lines of black and white quartz giving this stone more movement and character. Only available in Rock Faced to create a face that is more protruding and rocky. Surfaces have a thermal texture.

- **Size Description:** Available in 4- thru 8' length; 12" depth and 2" thick. Rock face on (3) sides.

Woodbury



Quarried & fabricated in Vermont, this is the traditional salt and pepper granite. Available in Split Faced to create a face that is coarse in texture. Surfaces have a thermal texture.

- **Size Description:** Available in 4' thru 8' lengths; 12" depth and 2" thickness. Split face on (3) sides.

NORTHERN NEW ENGLAND'S

Leading Supplier for Granite & New England Stone



BRICK • STONE • HARDSCAPE SUPPLY
Madbury, NH



Nationwide
Dealers & Distributors

We represent OVER 50 QUARRIES
from New England, New York
and Pennsylvania.

NATIONWIDE Shipping
From our New Hampshire
Stone Yards.

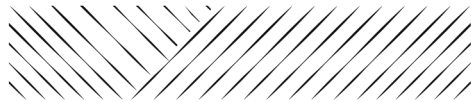
A division of LandCare Associates, Inc.



BRICK • STONE • HARDSCAPE SUPPLY
Stratham, NH



LANDCARESTONE.COM



NEW ENGLAND
RGSTD **STONE** DSTRS

NATURAL QUARIED STONE FOR MASONRY * LANDSCAPING* CONSTRUCTION

New England Stone Distributors
282 Knox Marsh Road
Madbury, New Hampshire 03823
(603) 743-3559